

RS PRO 5100 SC

with motion detector & Bluetooth
 EAN 4007841 078881
 Article number 078881



Function description

Our engineers agreed: The new damp-proof light should be simple and good. Easy to install and maintain, good in energy efficiency, function and quality. The moisture-proof luminaire the world has been waiting for. Robust, highly functional, child's play to install, wireless to network and ultimately convenient to adjust via smartphone. 360° high-frequency sensor, 10 m range. With 4250 lm at 31 W and 4000 K. No unintentional switch-off thanks to presence mode.

Technical specifications

Dimensions (L x W x H)	1370 x 87 x 58 mm	Total product efficiency	137 lm/W
With lamp	Yes, LED lamp	Colour temperature	4000 K
With motion detector	Yes	Colour variation LED	SDCM3
Manufacturer's Warranty	5 years	Lamp	LED cannot be replaced
Settings via	Bluetooth	LED cooling system	Passive Thermo Control
Version	with motion detector & Bluetooth	Twilight setting	2 – 2000 lx
PU1, EAN	4007841078881	Time setting	5 s – 60 Min.
Colour	grey	Basic light level function	Yes
Installation site	wall, ceiling	Basic light level function time	1-60 min
Installation	Wall, Ceiling, Surface wiring	Main light adjustable	10 - 100 %
Impact resistance	IK07	Interconnection	Yes
IP-rating	IP65	Interconnection via	Bluetooth Mesh Connect
Protection class	II	Lifetime LED according to IEC-62717 (L70)	100.000 h
Ambient temperature	-20 – 40 °C	Lifetime LED according to IEC-62717 (L80)	68.000 h
Housing material	Plastic	Lebensdauer LED nach IES TM-21 (L70)	>60.000 h
Cover material	Plastic, structured		
Mains power supply	220 – 240 V / 50 – 60 Hz		

RS PRO 5100 SC

with motion detector & Bluetooth
EAN 4007841 078881
Article number 078881



Technical specifications

Power consumption	0,41 W
Mounting height max.	3,50 m
Detection	also through glass, wood and stud walls
Electronic scalability	Yes
Mechanical scalability	No
Reach, radial	Ø 10 m (79 m ²)
Reach, tangential	Ø 10 m (79 m ²)
Transmitter power	< 1 mW
Luminous flux total product	4250 lm

Lifetime LED according to IES TM-21 (L80)	>60.000 h
Fuse protection B10	41
Fuse protection B16	65
Fuse protection C10	67
Fuse protection C16	108
Basic light level function in per cent	0 – 100 %
Output	31 W
Colour Rendering Index CRI	= 82
Photobiological safety in accordance with EN 62471	RG1
Starting current, maximum	14,8 A
Angle of aperture	160 °

Sensor-switched LED indoor light - Professional Line

RS PRO 5100 SC

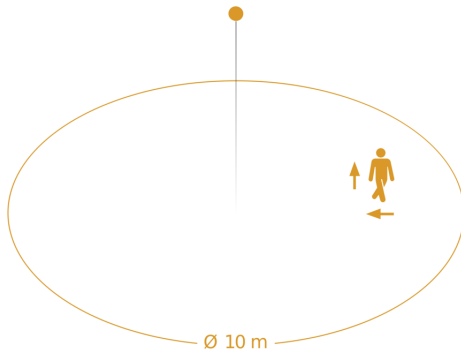
with motion detector & Bluetooth

EAN 4007841 078881

Article number 078881



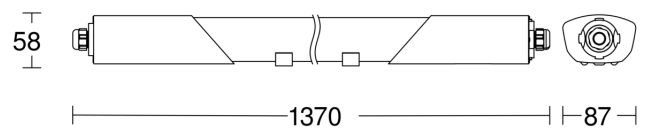
Detection Zone



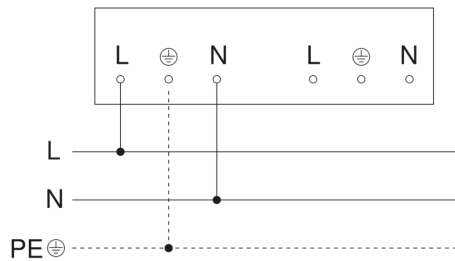
Possible mounting height: ~ 3,50 m

Orange: radial and tangential

Dimension Drawing



Master circuit diagram



RS PRO 5100 SC

with motion detector & Bluetooth
EAN 4007841 078881
Article number 078881



Master/slave and master/master interconnection circuit diagram

